

Regional Crime Gun Intelligence Center Multi-Site Training 2022 – Indianapolis, IN

Supported by BJA's National Resource and Technical Assistance Center for Improving Law Enforcement Investigations (NRTAC) and the Indiana Crime Guns Task Force



INDIANA CRIME GUNS TASK FORCE

Disrupting the cycle of violence in our community



The GunStat Model

A Data-Driven Strategy to Address Gun Crime

Tammy Brown,
BJA Senior Policy Advisor

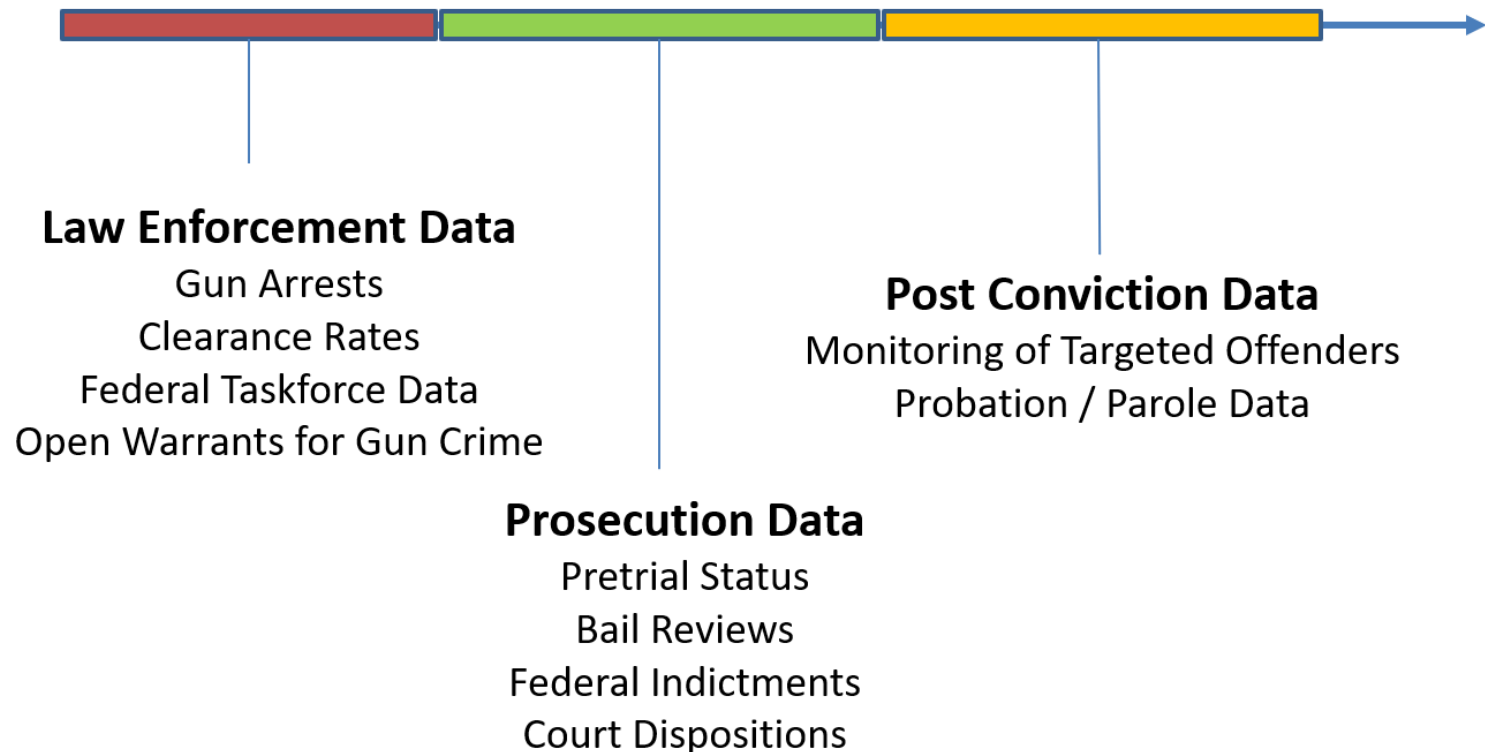
John Skinner, Ph.D.

What we know...

- Research has shown that a **small number of offenders** account for a disproportionate volume of violent crime
- Offenders and victims of street violence often share similar high-risk behaviors, to include **access** to and **possession** of guns.
- Strategies to identify, track, and disrupt gun offenders have been proven to be **effective** in reducing gun violence.

In most jurisdiction intelligence information and data on gun offenders is fragmented across different criminal justice agencies.

Understanding the Process



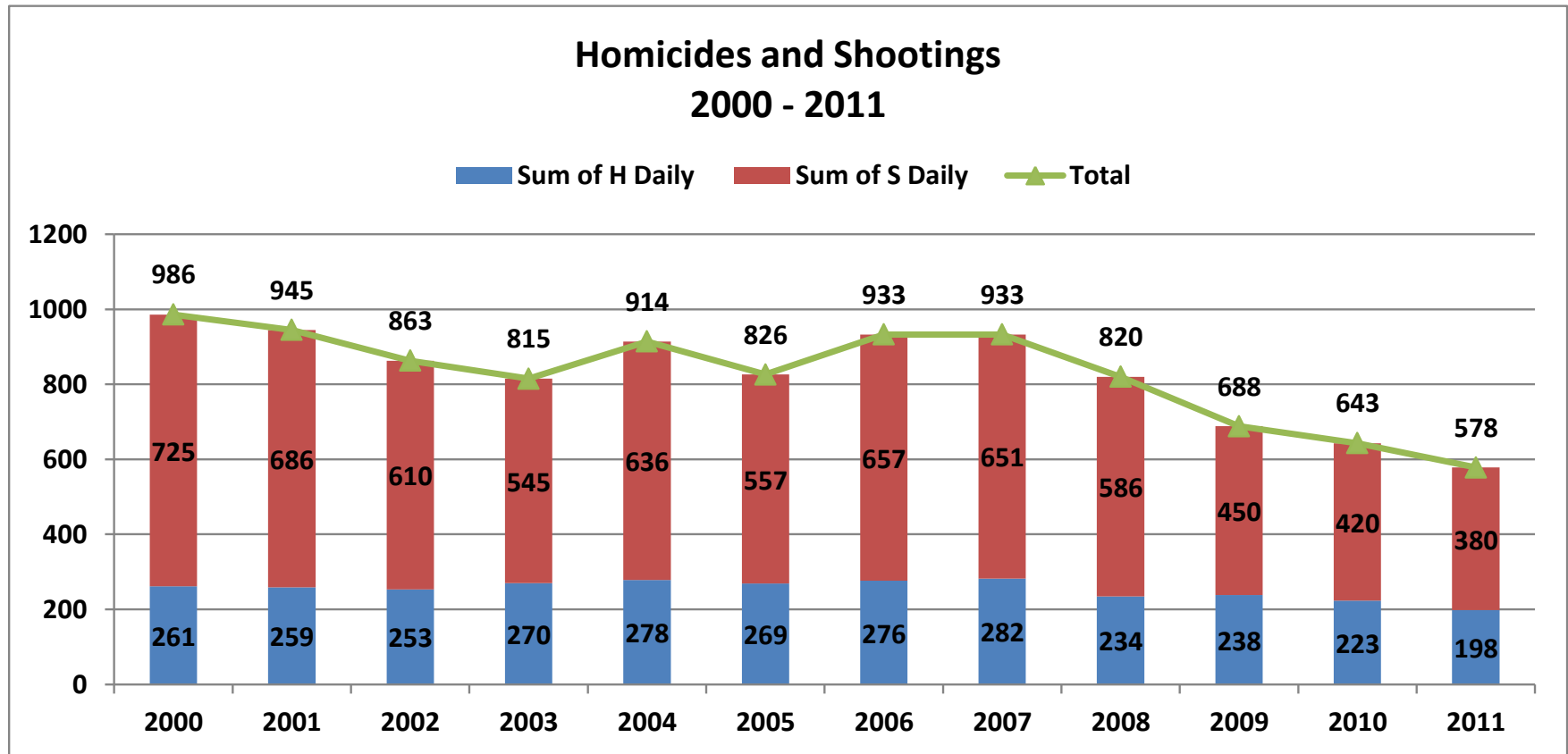
The GunStat Model

Program initiated in Baltimore in 2007, has become a national model for collaborative approaches to reduce violent crime.

The GunStat model measures **collective strategies/benchmarks** that lead to an overall reduction of violent gun related crime.

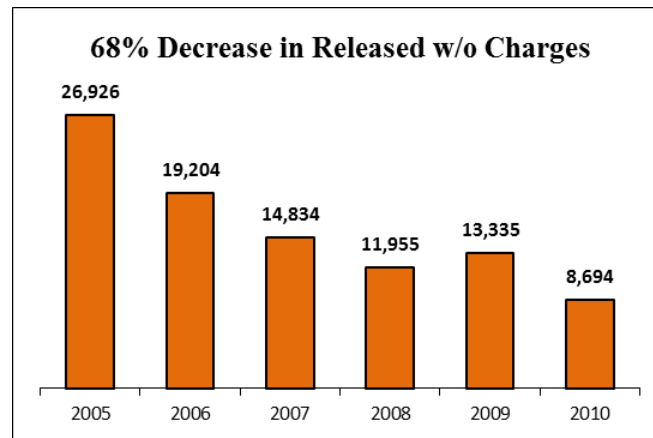
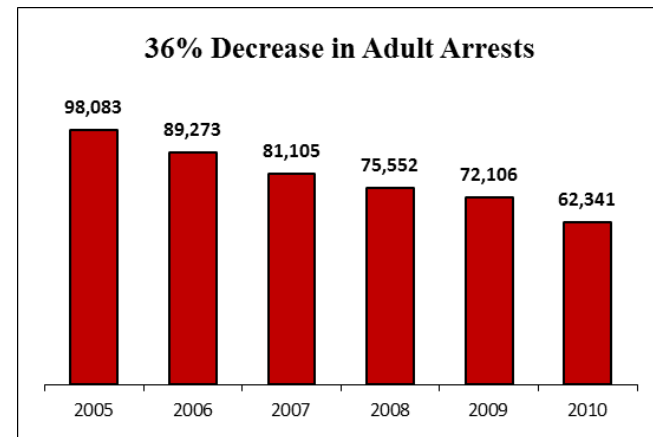
- Specific emphasis is placed on individuals who have been arrested on gun-related cases.
- These individuals are comprehensively tracked and prioritized by a coalition of criminal justice agencies.

How the Process Began



Quality Over Quantity

- Prioritization of violent offenders
- Dramatic reduction in arrests corresponding with the reduction in violent crime
- Dramatic reduction in offenders being released without charges.



The Coalition of Partners

Government

- Mayor's Office
- Governor's Office

Law Enforcement

- City/County Police
- State Police
- ATF
- Task Forces

Prosecution

- District Attorney's Office
- U.S. Attorney's Office

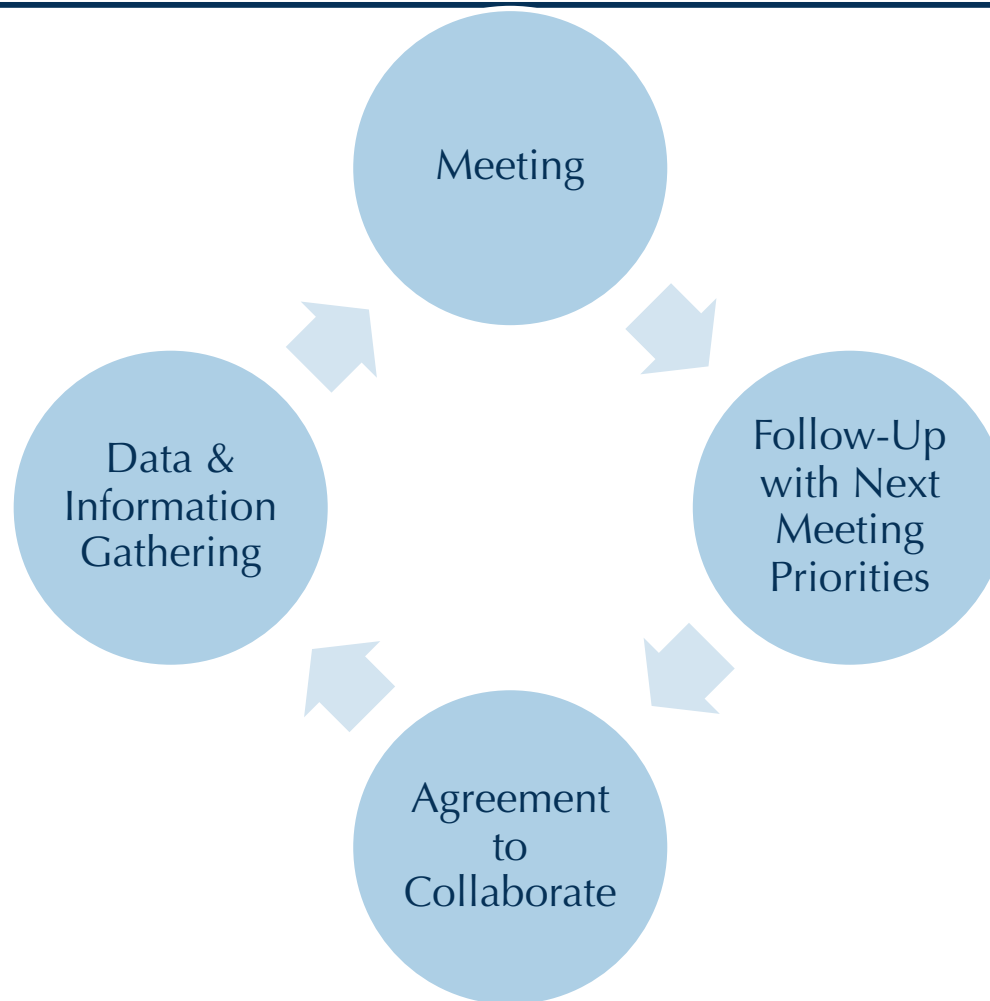
Community Supervision Agencies

- Department of Juvenile Services
- Parole, Probation and Corrections
- Department of Pretrial Services

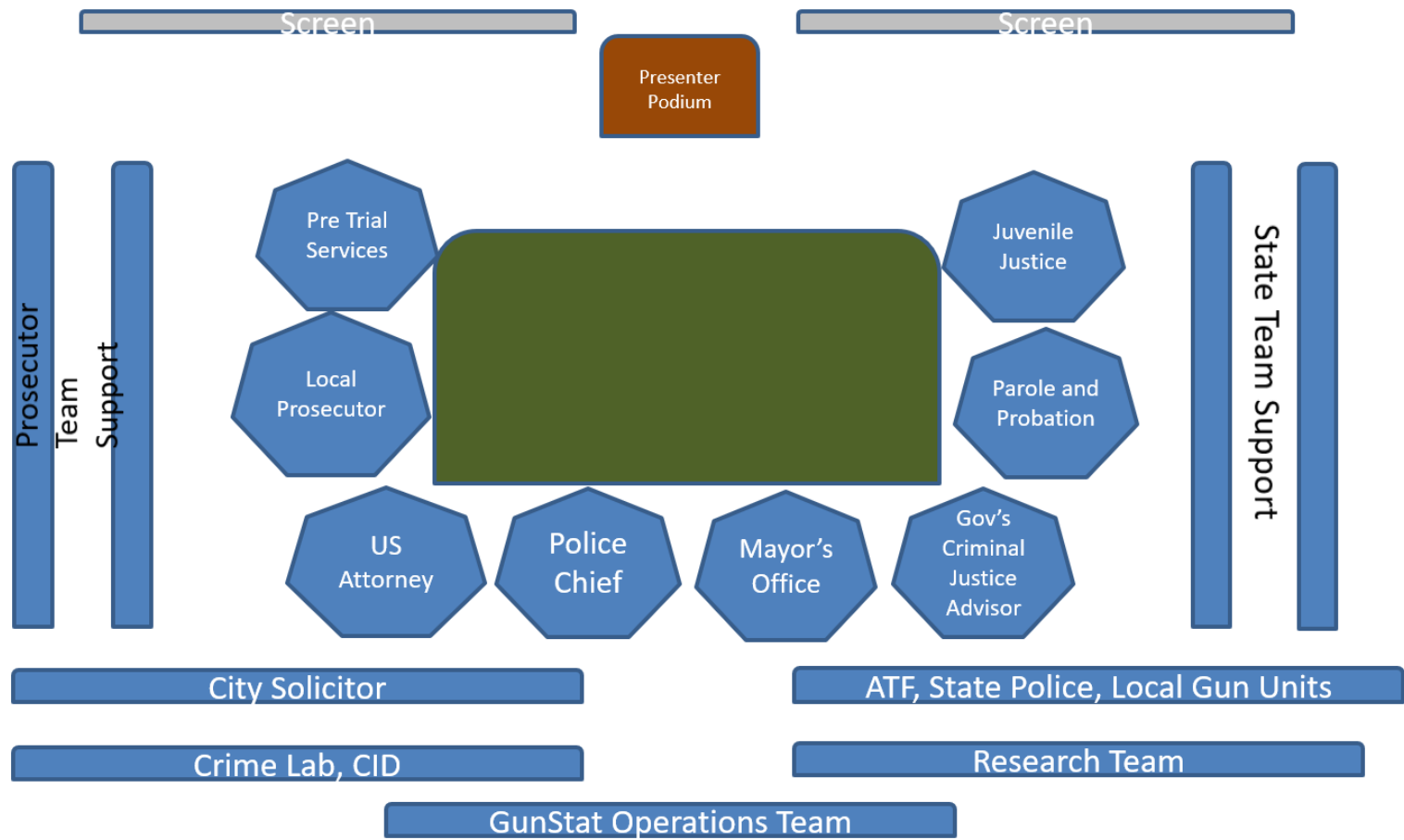
Other

- Local Research Partner
- Local Health Department
- City Attorney's Office
- Community Prevention and Intervention Programs

The Process



Setting the Stage



The Benchmarks

- **Trends in Gun Crime**
 - Analysis of Gun Arrests
 - Analysis of Guns Seized
 - Clearance Rates
 - Analysis of Open Warrants for Gun Related Crime
 - Pretrial Confinement Status
 - Analysis of Bail
 - Federal Indictments
 - Analysis of Convictions for Gun Crime
 - Analysis of Case Outcomes and Sentences

GunStat Database

GunStat Menu

Search

New Case

Batch Upload

Reports

Manage Users

Help

Log Out

GunStat

Search

Search

ID

SID #

Last Name

First Name

DOB

Age
 <SELECT->

Zip Code

Batch/Hand Entered Case
☐ No ☐ Yes ☒ Both

☐ Include Reverse Waiver and Expunged

Charges

Gun Charge
<SELECT->

Arrest Date
From

Released Date
From

Released On Bail
☐ No ☐ Yes ☒ Both

Bail Set by Court Comm.
 <SELECT->

Bail Review by Judge
 <SELECT->

Prior Arrest
<SELECT->

Prior Convictions
<SELECT->

Gun Arrest
<SELECT->

Prior Gun Convictions
<SELECT->

Federal Sig Conv
<SELECT->

Parole/Probation

☐ N/A ☐ Probation ☐ Parole ☐ Mandatory Release ☐ PBJ

State Attorney's Office

Next Court Date
From

Date of Final Disposition
From

Case Disposition State Court
☐ Guilty ☐ Not Guilty ☐ PBJ ☐ Not Pros ☐ STET ☐ Acquitted ☐ Dismissed ☐ Reverse Waiver ☐ NCR

Sentence(in months)
 <SELECT->

Suspended (in months)
 <SELECT->

Probation
 <SELECT->

District Court Case #

Circuit Court Case #

State Tracking #

Judge

ASA Currently Assigned

Gun Arrests

Gun Arrests	7 Day			14 Day			28 Day			YTD			
	2/2 to 2/8			1/26 to 2/8			1/12 to 2/8			1/1 to 2/8			
DIVISION NAME	2013	2014	%	2013	2014	%	2013	2014	%	2013	2014	+/-	%
BALTIMORE POLICE - MISC	0	0	0%	0	0	0%	-1	0	-100%	1	1	0	0%
CENTRAL DISTRICT	3	4	33%	6	4	-33%	-11	-8	-27%	14	9	-5	-36%
CHIEF OF PATROL	0	0	0%	0	0	0%	0	0	0%	0	0	0	0%
CRIMINAL INVESTIGATION DIVISION	1	2	100%	4	3	-25%	-6	-8	33%	11	9	-2	-18%
EASTERN DISTRICT	0	3	300%	2	4	100%	-7	-4	-43%	12	5	-7	-58%
INSPECTIONAL SERVICES	0	0	0%	0	0	0%	0	0	0%	0	0	0	0%
INTERNAL AFFAIRS SECTION	0	0	0%	0	0	0%	0	0	0%	0	0	0	0%
NORTHEASTERN DISTRICT	2	2	0%	6	6	0%	-19	-10	-47%	23	18	-5	-22%
NORTHERN DISTRICT	1	2	100%	1	4	300%	-3	-5	67%	3	7	4	133%
NORTHWESTERN DISTRICT	2	1	-50%	3	3	0%	-3	-4	33%	7	5	-2	-29%
OPERATIONS BUREAU	0	0	0%	0	0	0%	0	0	0%	0	0	0	0%
SOUTHEASTERN DISTRICT	2	1	-50%	2	7	250%	-3	-9	200%	8	11	3	38%
SOUTHERN DISTRICT	3	0	-100%	16	1	-94%	-23	-8	-65%	35	10	-25	-71%
SOUTHWESTERN DISTRICT	2	7	250%	2	8	300%	-10	-14	40%	15	20	5	33%
SPECIAL ENFORCEMENT SECTION	3	10	233%	9	18	100%	-19	47	-347%	30	64	34	113%
TACTICAL DIVISION	0	0	0%	0	0	0%	-5	-1	-80%	5	2	-3	-60%
TRAFFIC SECTION	0	0	0%	0	0	0%	0	0	0%	0	0	0	0%
WESTERN DISTRICT	0	2	200%	0	8	800%	-3	-9	200%	8	18	10	125%
TOTAL	19	34	79%	51	66	29%	-113	-33	-71%	172	179	7	4%

YTD Period: 1/1/2014 vs 2/8/2014				28 Day Period: 1/12/2014 vs 2/8/2014			
Total Guns Recovered YTD*	2013	2014	% +/-	Total Guns Recovered 28 Day	2013	2014	% +/-
CENTRAL	24	11	-54.17%	CENTRAL	19	10	-47.37%
SOUTHEASTERN	22	19	-13.64%	SOUTHEASTERN	9	12	33.33%
EASTERN	35	26	-25.71%	EASTERN	25	21	-16.00%
NORTHEASTERN	50	23	-54.00%	NORTHEASTERN	39	13	-66.67%
NORTHERN	12	12	0.00%	NORTHERN	10	11	10.00%
NORTHWESTERN	35	24	-31.43%	NORTHWESTERN	19	15	-21.05%
WESTERN	20	31	55.00%	WESTERN	12	21	75.00%
SOUTHWESTERN	34	12	-64.71%	SOUTHWESTERN	24	8	-66.67%
SOUTHERN	48	43	-10.42%	SOUTHERN	41	34	-17.07%
UNDETERMINED	22	24	9.09%	UNDETERMINED	14	20	42.86%
TOTAL	302	225	-25.50%	TOTAL	212	165	-22.17%



Clearance Rates

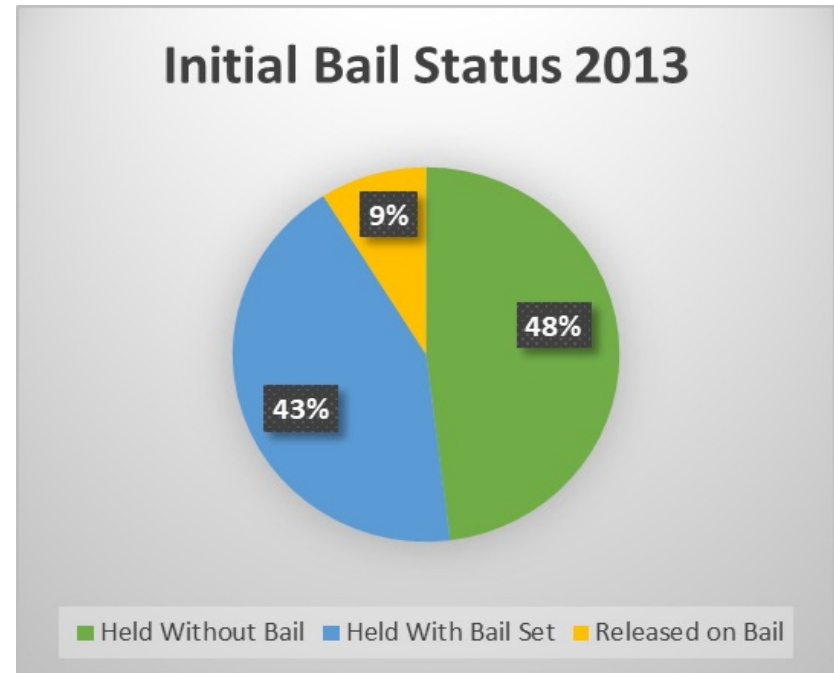
District	YTD HOMICIDES Occurring In:		<u>Clearance Count:</u> YTD Cases Cleared In & Occurring In:		YTD Cases Cleared In: (But Occurred Prior To)		<u>Combined Clearance Count:</u> YTD Total Of All Cases Cleared During:		YTD Cases Still Open For:		<u>Combined Clearance Rate</u> % of All Cases Cleared .vs. YTD Cases Occurred	
	2014	2013	2014	2013	2014	2013	2014	2013	2014	2013	2014	2013
Year	2014	2013	2014	2013	2014	2013	2014	2013	2014	2013	2014	2013
CD	1	2	0	0	1	1	1	1	1	2	100.0%	50.0%
SED	3	1	3	0	0	1	3	1	0	1	100.0%	100.0%
ED	2	1	0	1	2	1	2	2	2	0	100.0%	200.0%
NED	4	3	0	1	0	0	0	1	4	2	0.0%	33.3%
ND	4	2	1	1	0	1	1	2	3	1	25.0%	100.0%
NWD	5	2	1	0	1	0	2	0	4	2	40.0%	0.0%
WD	3	5	0	2	1	0	1	2	3	3	33.3%	40.0%
SWD	5	4	1	1	0	1	1	2	4	3	20.0%	50.0%
SD	2	1	0	0	1	0	1	0	2	1	50.0%	0.0%
Total	29	21	6	6	6	5	12	11	23	15	41.4%	52.4%

District	YTD SHOOTINGS Occurring In:		<u>Clearance Count:</u> YTD Cases Cleared In & Occurring In:		YTD Cases Cleared In: (Occurring in Previous Yrs)		<u>Combined Clearance Count:</u> YTD Total Of All Cases Cleared During:		YTD Cases Still Open For:		YTD Non Fatal Shootings Occurring w/Homicides In:		<u>Combined Clearance Rate</u> % of All Cases Cleared .vs. YTD Cases Occurred	
	2014	2013	2014	2013	2014	2013	2014	2013	2014	2013	2014	2013	2014	2013
Year	2014	2013	2014	2013	2014	2013	2014	2013	2014	2013	2014	2013	2014	2013
CD	3	3	0	0	3	2	3	2	3	3	0	0	100.0%	66.7%
SED	4	2	1	0	1	0	2	0	3	2	0	1	50.0%	0.0%
ED	2	7	0	2	0	2	0	4	2	5	0	0	0.0%	57.1%
NED	10	7	3	5	0	4	3	9	7	2	0	0	30.0%	128.6%
ND	0	1	0	0	0	3	0	3	0	1	0	0	0.0%	300.0%
NWD	3	6	2	2	8	1	10	3	1	4	1	2	333.3%	50.0%
WD	6	7	3	6	2	1	5	7	3	1	0	2	83.3%	100.0%
SWD	7	2	1	1	0	1	1	2	6	1	1	2	14.3%	100.0%
SD	1	6	0	3	2	1	2	4	1	3	0	0	200.0%	66.7%
Total	36	41	10	19	16	15	26	34	26	22	2	7	72.2%	82.9%



Bail Status

- The chance of being found guilty was **13% to 35%** higher when the accused remained confined while awaiting trial.
- Helps disrupt patterns of violence.
- Understanding how this ties to bail reform efforts.



Court Dispositions

Circuit Court Case Final Dispositions						
Year	2009	2010	2011	2012	2013	Grand Total
Total Circuit Court Charges	581	782	1055	852	881	4151
Acquitted	0.52%	0.90%	0.28%	0.70%	0.68%	0.60%
Dismissed	0.17%	0.13%	0.47%	0.35%	0.34%	0.31%
Guilty	51.81%	56.14%	54.88%	62.21%	60.16%	57.31%
NCR	0.00%	0.51%	0.09%	0.47%	0.00%	0.22%
Nol Pros	29.09%	26.09%	27.87%	22.07%	25.54%	26.02%
Not Guilty	5.34%	4.86%	5.02%	5.75%	6.02%	5.40%
PBJ	5.34%	2.56%	1.80%	2.58%	3.29%	2.91%
STET	7.75%	8.82%	9.57%	5.87%	3.97%	7.23%
Total	100.00%	100.00%	100.00%	100.00%	100.00%	100.00%

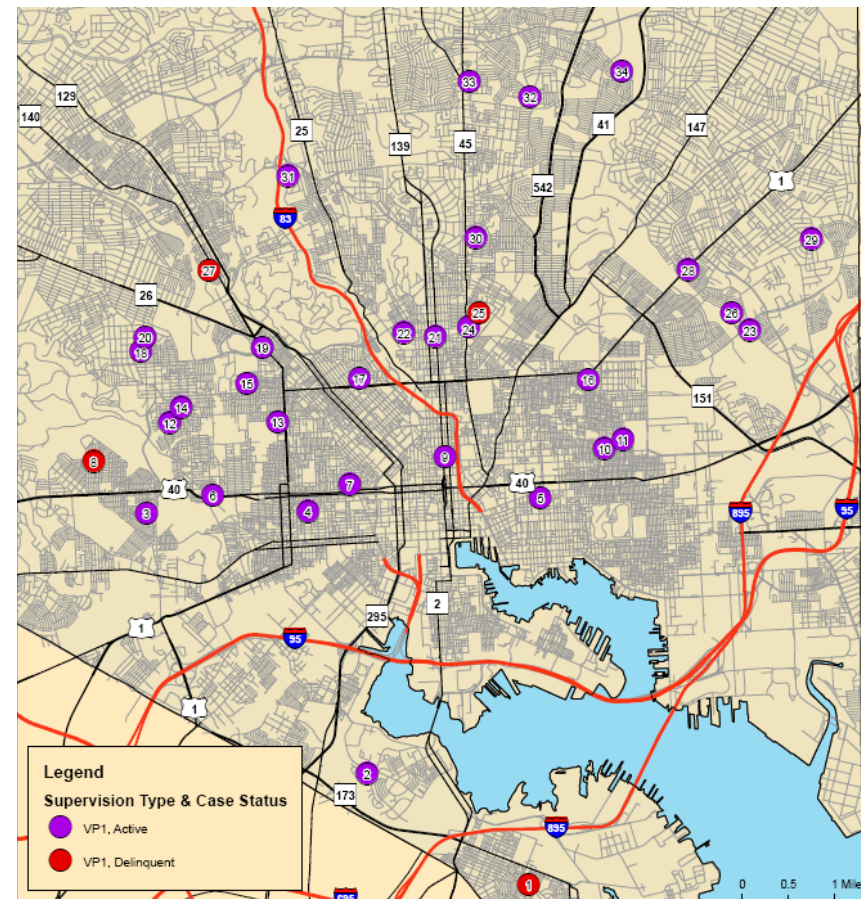
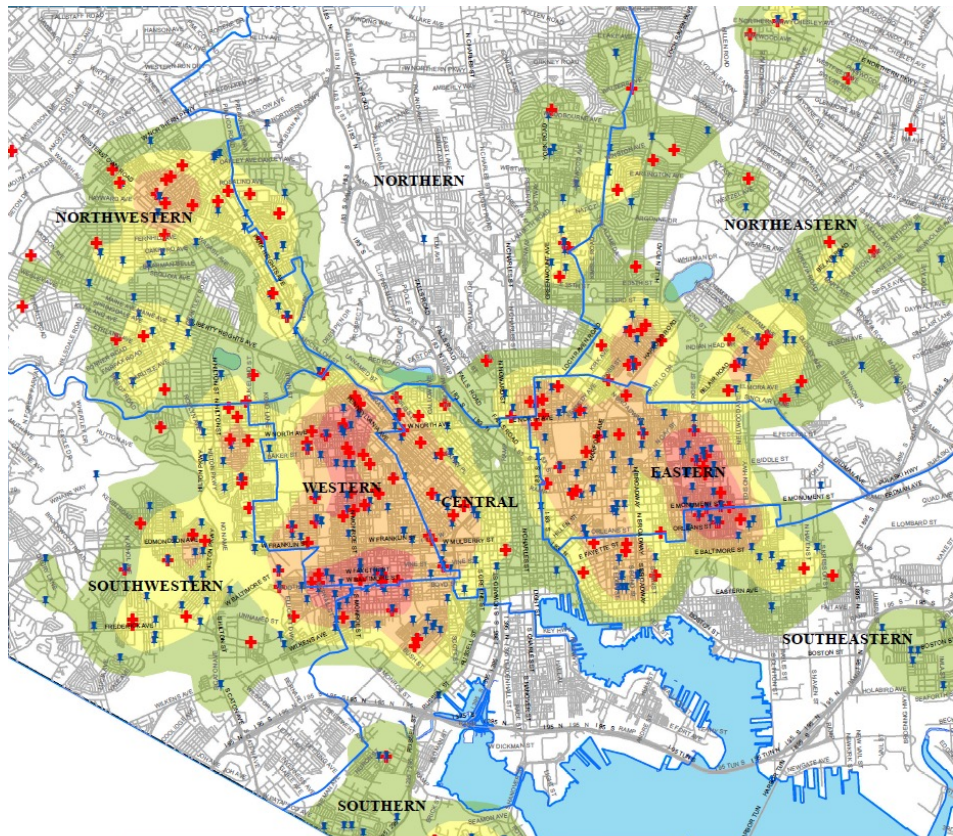


Federal Prosecutions

EXILE - HIDTA		
Year	Indictments	Defendants
2006	No Data	No Data
2007	No Data	No Data
2008	63	73
2009	59	62
2010	71	73
2011	58	72
2012	52	56
2013	47	49

Total Baltimore EXILE Cases		
Year	Indictments	Defendants
2006	115	151
2007	151	197
2008	120	210
2009	118	206
2010	142	224
2011	113	239
2012	105	217
2013	91	261

Geographic Patterns



Post Conviction Monitoring

PAROLE AND PROBATION OUTCOMES BY YEAR CASE WAS CLOSED					
SOURCE: DPSCS					
YEAR	2009	2010	2011	2012	2013
SATISFACTORY CLOSING	9,802	8,427	5,056	5,531	8,067
TECHNICAL REVOCATION	2,045	1,699	864	813	1,211
NEW OFFENSE REVOCATION	1,498	1,362	801	800	1,205
TOTAL	13,345	11,488	6,721	7,144	10,483
% SATISFACTORY	73%	73%	75%	77%	77%
% TECHNICAL	15%	15%	13%	11%	12%
% NEW OFFENSE	11%	12%	12%	11%	11%



Results in Baltimore

- Over a 30% reduction in homicides and non-fatal shooting within 3-years of implementation of the GunStat program.
- Enforcement became more strategic. The reduction of violence corresponded with over a 20% reduction in arrests. Over 18,000 less people were arrested within the first 3 years of the GunStat program.
- Increase in Federal prosecutions.
- Increase in the overall successful prosecution of gun offenders.

Building a Successful GunStat Model

- Develop a **Coalition** of Stakeholders
- Identify a **Neutral Coordinator** to Manage the Process
- Initiate a Collaborative **Monthly Meeting** with Mandatory Participation
- Identify Core **Inter-Agency Data** for Analysis
- Establish **Benchmarks and Realistic Goals**: Find Early Wins
- Work with a **Research Partner** to Comprehensively Evaluate Progress and Outcomes

Questions

